



Outlook

CONGAREE LAND TRUST

2022
VOLUME 25

30th Anniversary
CONGAREE
LAND TRUST

OUR MISSION: To promote voluntary conservation of scenic lands, open spaces, farms, forests, natural areas, and significant habitats in central South Carolina.

Land Protection Strategy

Increase the pace and quality of land conservation through a collaborative approach with a broad group of stakeholders to include landowners, conservation NGO's, government, academia, and industry.

Deliver impactful conservation outcomes by prioritizing CLT's regional areas of focus while seeking those properties that meet multiple conservation objectives and provide optimum ecosystem benefits.



CONSERVATION OBJECTIVES/ NEEDS A WATERSHED APPROACH

Conservation at the watershed level delivers greater benefits to our communities—both people and wildlife. Our focus is on finding land that meets those objectives in the following areas of central South Carolina: COWASEE Basin Focus Area, Santee Basin Focus Area, Lynches River Watershed, Lower Broad River Watershed, Edisto River Watershed, and a portion of Pee Dee River Basin.



In the fall of 1991, a small group of individuals serving on the Columbia Environmental Committee recognized the importance of environmental issues and determined a need to improve the quality of life in the Midlands. These individuals established an objective, set forth a goal, and stepped forward to plant the first seeds towards the formation of the Congaree Land Trust. Their vision for land conservation was realized and has continued to produce an amazing network of conserved lands throughout central South Carolina that will be protected forever.

Celebrating 30 years of conservation throughout this year has provided us the opportunity to reflect upon and share some of the significant moments and accomplishments of the past. Each and every one of these is the result of a seed planted and nourished by the many landowners, foresters, farmers, conservation partners, donors and members, board and staff. In the following pages, you'll discover more about our early and most recent conservation related projects that are worthy of celebration.

To look back on our 30 years, here are just a few accomplishments and firsts that shouldn't be missed:

- In 1995, SCE&G (now Dominion Energy) donated CLT's first conservation easement of 400 acres along the Edisto River in Cope, SC.
- The Beidler Family has preserved 7,621.97 acres (8 easements) in the COWASEE Basin—the most conservation easements and total acres conserved by a single landowner with CLT.
- In 2012, CLT gained accreditation through the Land Trust Accreditation Commission.

- In 2016, CLT received their first agriculture conservation easement on 440 acres at Millwood Farm in Orangeburg. Owned by Hayne and Salley Culler.
- In 2022, CLT completed its first donation of land for public recreation to SCPRT with the addition of 350 acres at Lee State Park.

So what does the next 30 years look like and where to we go from here? From a conservation and environmental perspective there's still much to be done to meet the growing needs and challenges that face our state. Land conservation and nature based solutions will continue to play a critical role as we strive to meet the ever increasing demands on our natural resources while fostering sustainability and quality of life in our communities. CLT will continue to focus on the protection of private lands with a watershed conservation approach, public land projects, protection of critical farm lands, and mitigating the impact of oncoming development as well as weather related events.

We are so very thankful for your commitment, support, and all that you have enabled us to accomplish over the last 30 years. We hope that you will continue to partner with us as we plant the seeds of conservation for the next 30 and beyond.



Stuart White
STUART WHITE Executive Director



Tripp Bradley
TRIPP BRADLEY Board President

CLT STAFF

STUART WHITE

Executive Director

MARY CROCKETT

Director of Land Protection

MARK LOWERY

Land Stewardship Coordinator

ELIZABETH BURT

Development & Communications Director

JORDAN SEEGER

Community & Donor Relations Coordinator

BOARD OF DIRECTORS 2022-23

MR. TRIPP BRADLEY

President

MR. TRIP CHAVIS

Vice President

MR. CHRIS KIRK

Secretary

MR. RUSSELL BAUKNIGHT

Treasurer

MEMBERS AT LARGE

MR. HENRY BEARD III

MR. MARTIN BROWN

MR. ROBERT BUNCH

MR. CHARLES CARSON

MRS. TINA FANT EMERSON

MR. WILLIAM M. HASELDEN

MR. ART LANEY

MR. THOMAS LANEY

MRS. KIMBERLEE NEEL

MR. ETHAN NORD

MR. DAVID C. SOJOURNER

MR. HUNTER SUGGS

MR. H. DALLON WEATHERS

MR. JOHNNY WILLIAMSON III

LAND PROTECTION COMMITTEE 2022-23

JUDY BARNES

BILL BUNCH

ROBERT BUNCH

BILLY CATE

TRIP CHAVIS

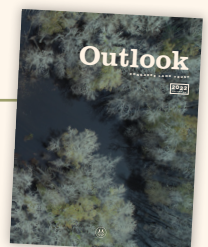
CHRISTIAN HENDRICKS

FRANK A. MCLEOD III

ALAN J. REYNER

BENTON WILLIAMSON

ON THE COVER: FIRST CONSERVATION EASEMENT, 396.5 ACRES - SOUTH FORK EDISTO RIVER IN COPE, SC. DONATED BY SCEGG ON APRIL 22, 1994. PHOTO BY MARK LOWERY





taking a
LOOK
back



CONGAREE LAND TRUST'S *first Conservation Easement*

Tucked away in a remote corner of Orangeburg County, the plant has had a critical role providing reliable energy for Dominion Energy South Carolina's customers since its construction three decades ago. But its remoteness also creates an opportunity to protect unique natural treasures along the nearby South Fork Edisto River.

SITE
DOMINION ENERGY'S COPE STATION

COUNTY
ORANGEBURG Co.

STATE
SO. CAROLINA




LOCATED ON 3,200 ACRES of Dominion Energy-owned property, Cope Station operates within a footprint of approximately 230 acres. The remainder of the land is undeveloped, much of it protected by the Congaree Land Trust's first-ever conservation easement.

"What most people don't realize is that our generating plants are surrounded by rather large natural areas where plants and wildlife thrive," said Tom Effinger, director of environmental services for Dominion Energy. "These areas are important because they allow nature to recharge itself, helping sustain the ecosystem."

Effinger, who has been with the company for 41 years, was involved with siting and construction of Cope Station. He said the company conducted a thorough, yearlong environmental assessment of the entire site. The assessment included a blackwater swamp along the South Fork Edisto River, an undeveloped area featuring bottomland hardwoods, water tupelo plants, bald cypress trees and diverse, thriving wildlife.

"During that assessment, it became clear that the area near the river was unique and needed to be preserved," Effinger said.



What most people don't realize is that our generating plants are surrounded by rather large natural areas where plants and wildlife thrive.

TOP: Looking upstream on the South Fork Edisto River

BOTTOM: Tom Effinger, Director of Environmental Services for Dominion Energy



ABOVE: Meribeth Moore and Tom Kohlsaas present Dominion Energy's Iris Griffin with a framed picture of the cope easement at the 2022 Game and Garden event.

"It really became a win-win for us to find out about the Congaree Land Trust, which was a new organization, and to work with them to set aside such a valuable resource."

In 1994, Congaree Land Trust and Dominion Energy's predecessor company in South Carolina created a 400-acre conservation easement along approximately five river miles of the South Fork Edisto River, designed to permanently protect the land and help preserve its natural resources.

The conservation easement at Cope Station marked history for the Congaree Land Trust as the beginning of what would eventually become 90,000 acres of conservation easements held by the organization throughout central South Carolina.

"The Cope easement really set the stage for our conservation efforts and the easements that we would go on to hold and protect in a vast area along a watershed that's important to this state," said Stuart White, executive director of the Congaree Land Trust. "But more importantly, it set the stage for conservation groups and business to work together, demonstrating a corporation successfully working directly with us in our mission to protect landscapes for the future."

Today, the Cope easement is one of only a few blackwater swamp conservation easements in the United States. Just as they did before the plant was constructed, local residents and visitors still enjoy recreational activities like fishing, paddling and hiking on the South Fork Edisto River and can look forward to it being permanently protected for these activities.

Effinger said he is glad that future generations will continue to enjoy the natural beauty of the South Fork Edisto River area as well as other natural areas that Dominion Energy has worked to preserve through conservation easements.

"Dominion Energy is committed to demonstrating environmental stewardship and ensuring that natural resources are preserved for future generations," Effinger said. "The Cope easement does exactly that, and we should all be proud."

THOUGHTS ON 30 YEARS



"Had it not been for the original members of the Congaree Land Trust, I am not sure that the decades long land conservation effort and success in the Midlands South Carolina would have been possible. Those original 100 members were the ripple effect which created the massive growth in membership. So many of you have not faltered and continue to support the Congaree Land Trust. Every member who has contributed money, time and talents during these past 30 years, please take a bow. I sincerely thank you."

— MERIBETH MOORE CLT's 1st Executive Director



"Having been involved with CLT for 30 years, I have witnessed wonderful growth in the protection of land in South Carolina and across the country. I think that the single most important accomplishment is the formation of the COWASEE Basin Focus Area. It gave the Congaree Land Trust an important land area right in our midst that provided CLT a larger focus. Additionally, becoming fully accredited was a huge achievement not just for CLT but the land trust industry as a whole."

The work CLT is doing is so important, you get to meet so many nice people and do something that really makes a difference for our community. It is just a warm and fuzzy business. I am honored to continue to help spread this mission."

— BILLY CATE
Conservation Easement Donor, Past Board President
& Previous Executive Director



"I've watched in amazement as CLT has grown to be what it is today. As the first board chairman, I witnessed CLT grow from a small, volunteer organization, and thanks to a leadership gift from the Columbia Junior League, into the successful organization it is now. CLT dramatically continues to realize our initial vision to preserve the "working landscape."

— TOM KOHLSAAT Founding Board President



It is so thrilling to be celebrating 30 years of the CLT! I've been blessed to do a wide variety of volunteering here through the decades. Working with a great committee and Board to get accredited by the Land Trust Alliance is one of the accomplishments I'm most proud of. I believe that helped lay a solid foundation to get us to this point with a great future ahead!

— ANN GRESSETTE Past Board President

Conservation *Highlights*

Get the latest conservation news at
CONGAREELT.ORG/NEWS

PICTURED: LEE STATE PARK

FEATURED

LEE STATE PARK

📍 BRANTLEY TRACT, DARLINGTON CO.
PARNELL AND WATKINS TRACTS, LEE CO.
🏡 350 ACRES | AUGUST 2019-2022

Congaree Land Trust, the Lynches River Conservation Board, the Central Carolina Community Foundation, and South Carolina Parks, Recreation and Tourism (State Park service) partnered to conserve more than 350 acres through a land donation to Lee State Park. Lee State Park will manage the land as part of a publicly accessed area in perpetuity for future generations.

“Protecting water quality and the ecological integrity of the Lynches River watershed is of the utmost importance. Through this partnership, we were able to accomplish our watershed protection goals while also meeting the increasing demand for public spaces,” said Stuart White, Executive Director of Congaree Land Trust. “Lee State Park and the state designated Lynches Scenic River provide outstanding opportunities for recreation and conservation education to local communities as well as those traveling through our beautiful state. We are thrilled to play a part in expanding these opportunities and securing these lands for the enjoyment and benefit of all.”



SCPRD DIRECTOR, DUANE PARRISH AND LEE COUNTY REPRESENTATIVE, WILL WHEELER LOOK ON WITH OTHERS AS CLT LAND PROTECTION DIRECTOR, MARY CROCKETT AND LEE STATE PARK MANAGER, DAN HANCOCK CUT THE RIBBON.

The three tracts have unique qualities that make them valuable additions to the park. The first tract is approximately 92 acres and is adjacent to the northwestern border of the existing park property and stretches to Lee State Park Road. The second tract extends the southern tip of existing park property, below Interstate 20. It is roughly 180 acres of swampland and floodplain forest along the Scenic Lynches River. The third tract is physically separate from the existing park footprint, adding approximately 92 acres and protecting frontage along the Lynches River just south of Darlington Highway.

Conveniently located off of Interstate 20 between Columbia and Florence, Lee State

Park offers rich natural habitats in a serene setting including bottomland hardwood forested wetlands that make up the majority of the park’s nearly 3,000 acres. A favorite park for horse enthusiasts, Lee offers 12 miles of equestrian trails and 23 equestrian campsites. From camping and hiking to fishing and educational programs, there is something for everyone to enjoy in this tranquil state park.

PARTNERS: Lynches River Conservation Board, Central Carolina Community Foundation, and SC Parks, Recreation and Tourism



FEATURED

CAMP DISCOVERY

📍 RICHLAND COUNTY | 🏡 116 ACRES | JULY 2021

Camp Discovery is situated on a 116 acre property in Blythewood, SC that includes forests, meadows, creeks and wetlands. The variety in the types of ecosystems around the property provides an ideal outdoor learning environment and allows for hands-on learning experiences accompanied by exploration.

The camp originated in 1985 as a recreation therapy program, aimed at serving children and youth in need throughout the community. Now, the

camp provides year-round experiential educational programs hosted in their outdoor-learning environment for people of all ages and backgrounds.

Since its founding in 1985, Camp Discovery has served over 15,000 children all across the midlands. In July of last year, a conservation easement was signed permanently conserving this diverse educational space for future generations.

PARTNER: Camp Discovery



CHAPMAN HOLDINGS OF SUMTER LLC TRACT

📍 SUMTER COUNTY | 📏 99.94 ACRES | SEPTEMBER 2022

This property located in Sumter County is mostly row crop agriculture with loblolly pines. Significant conservation values of this tract include the protection of productive agriculture land and is an addition to more than 20,000 acres of privately conserved lands in Sumter County supporting a greater variety and diversity of wildlife, including those fauna species with large home ranges. As this property is directly under the flight path of Shaw Joint Military Base, the conservation agreement ensures that the tract will continue to be managed in a manner compatible and in support of base operations.

PARTNERS: Danny Chapman, The Conservation Fund, US Dept. of Defense



EAGLE HOUSE MITIGATION AND FM TIMBER MITIGATION

📍 FAIRFIELD COUNTY
📏 99.21 ACRES | MARCH 2022

Eagle House and FM Timber LLC Mitigation Tracts are on approximately 99.21 acres along Taylor Creek in Fairfield County. The work completed here includes adding bends and woody debris or rocks in order to slow the flow of water thus preventing the deep incising of the creek bed. After the engineering work of bank stabilization is complete the riparian areas will be replanted with hardwood trees, ensuring lasting restoration of the natural floodplain.

PARTNERS: Eagle House Farms, LLC FM Timber, LLC, and Mike Tighe

MURRAY TRACT, LLC COMPARTMENT #10

📍 RICHLAND COUNTY | 📏 325.64 ACRES | SEPTEMBER 2022

Located in Richland County, this property is a forest tract with pines ranging in age from 3 years to mature timber. It has frontage to Leesburg Branch and the Palmetto Trail and is across the highway from Fort Jackson Military Base, thus helping to protect the area around this vital base. This property also supports populations of both game and nongame wildlife allowing for movement of species across the landscape.

PARTNERS: Frank Beidler, The Conservation Fund, US Dept. of Defense

NORTH FORK TRACT

📍 LEXINGTON COUNTY | 📏 36.7 ACRES | JULY 2022

36.7 acres located along the North Fork Edisto River in southern Lexington County is now conserved, thanks to the collaborative efforts of the Congaree Land Trust (CLT), The SC Conservation Bank (SCCB), and the landowners. Now under a conservation easement, this beautiful property is permanently protected to conserve wetlands within the Edisto River Basin. In addition to the easement, the landowners generously donated the land to CLT through a life estate in order for the property to be managed for public use and provide access to the North Fork of the Edisto River in the future.

PARTNERS: Nancy Barton and Bob Guild, South Carolina Conservation Bank



PICTURED ARE NANCY BARTON & BOB GUILD AT THE NORTH FORK TRACT



WOODWARD FARM

FAIRFIELD COUNTY | 493 ACRES | DECEMBER 2021

Woodward Farms is situated on approximately 493 acres within the Broad River Basin. By remaining forever in silviculture, the Property will conserve the water quality draining into Little River, which drains into the Broad River as a part of the Broad/Santee Basin watershed. Conserved forever, this property helps our air and water quality for generations to come while also keeping this working forest intact and productive.

PARTNER: John McSwain



GOAT HILL FARM

**FAIRFIELD COUNTY
62.98 | DECEMBER 2021**

Goat Hill Farm is located in northeastern Fairfield County along Lake Wateree within the larger Santee Basin. With ever increasing development pressure along the lakefront, this property is conserved to protect the view shed and diversity of habitats consisting of a mix of pine and hardwoods with populations of all major game species, including white-tailed deer and wild turkey.

PARTNER: Rebecca McSwain



SEAY FARMS

**RICHLAND COUNTY
314.55 ACRES | SEPTEMBER 2021**

Located in lower Richland County at the transition area between the Fall Line Sandhills Physiographic Province and Inner Coastal line, Seay Farms permanently conserves over 314 acres within the COWASEE Basin. The property also connects to the Wateree River Conservation Corridor (WRCC), a series of continuous or near continuous private Conservation Easements and public lands stretching to the confluence of the Wateree and Congaree Rivers.

“I am gratified by the opportunity to preserve a unique ecosystem,” said property owner and grantor Frank McLeod.” The property has a lot of history. I have been looking forward to protecting it for some time.”

PARTNERS: Frank McLeod, The Conservation Fund, US Dept. of Defense



BRITTON TRACT

SUMTER COUNTY | 306.32 ACRES | SEPTEMBER 2021

The Britton Tract in Sumter County, southeast of Fort Jackson Military Base and west of Shaw Air Force Base will permanently protect significant green space and wildlife habitat in central South Carolina while keeping the land in compatible use which supports ongoing operations of our military bases in the Midlands.

The grantor of this conservation easement is Elizabeth McLeod Britton. She shared, “My late husband, John Britton, had a lifelong passion for preserving the natural beauty of South Carolina. His passion became my passion. When we acquired this land, we worked hard to preserve and enhance it as a wildlife habitat for the enjoyment of future generations. I am thankful that the Congaree Land Trust has given me the opportunity to carry out the vision John and I shared.”

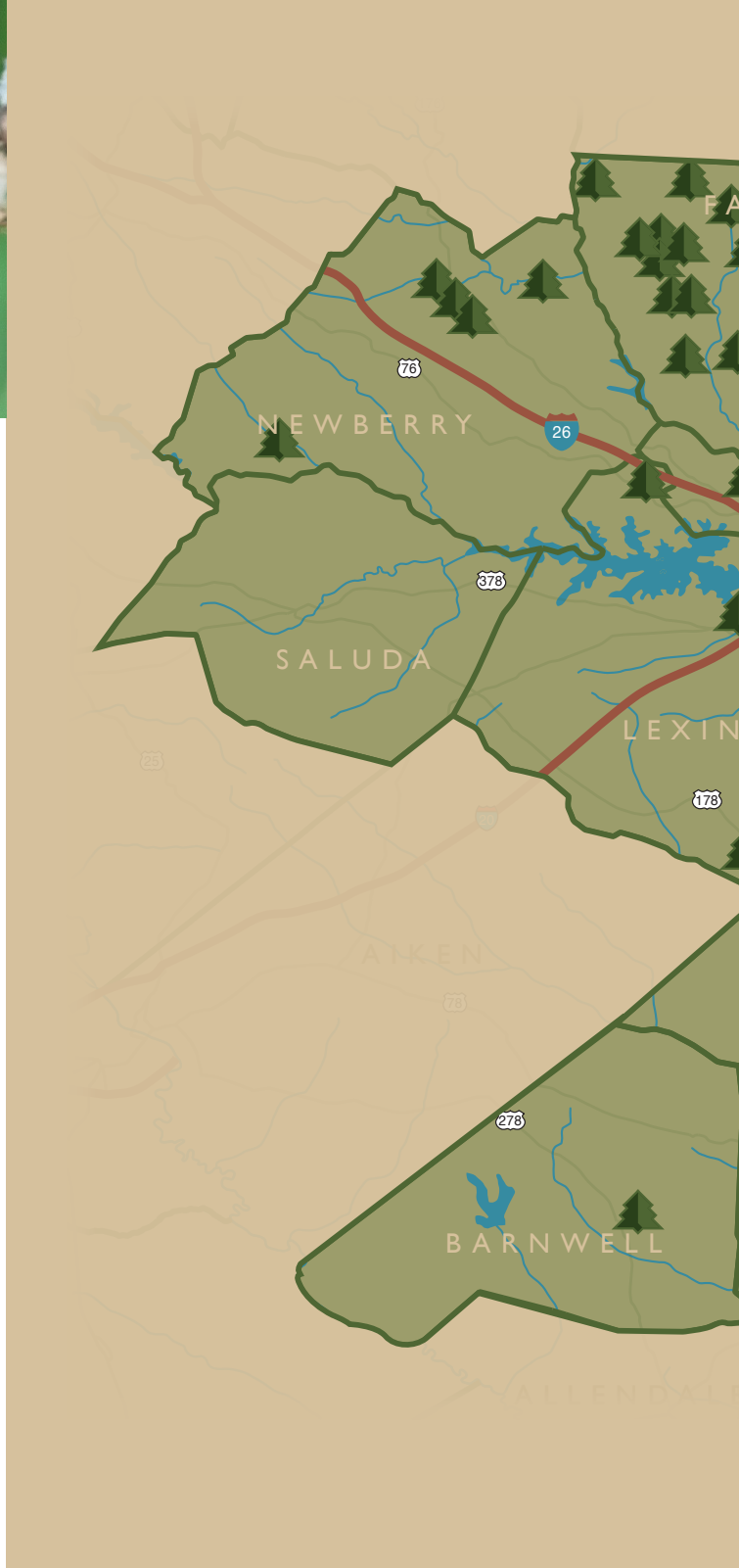
PARTNERS: Elizabeth Britton, The Conservation Fund, US Dept. of Defense

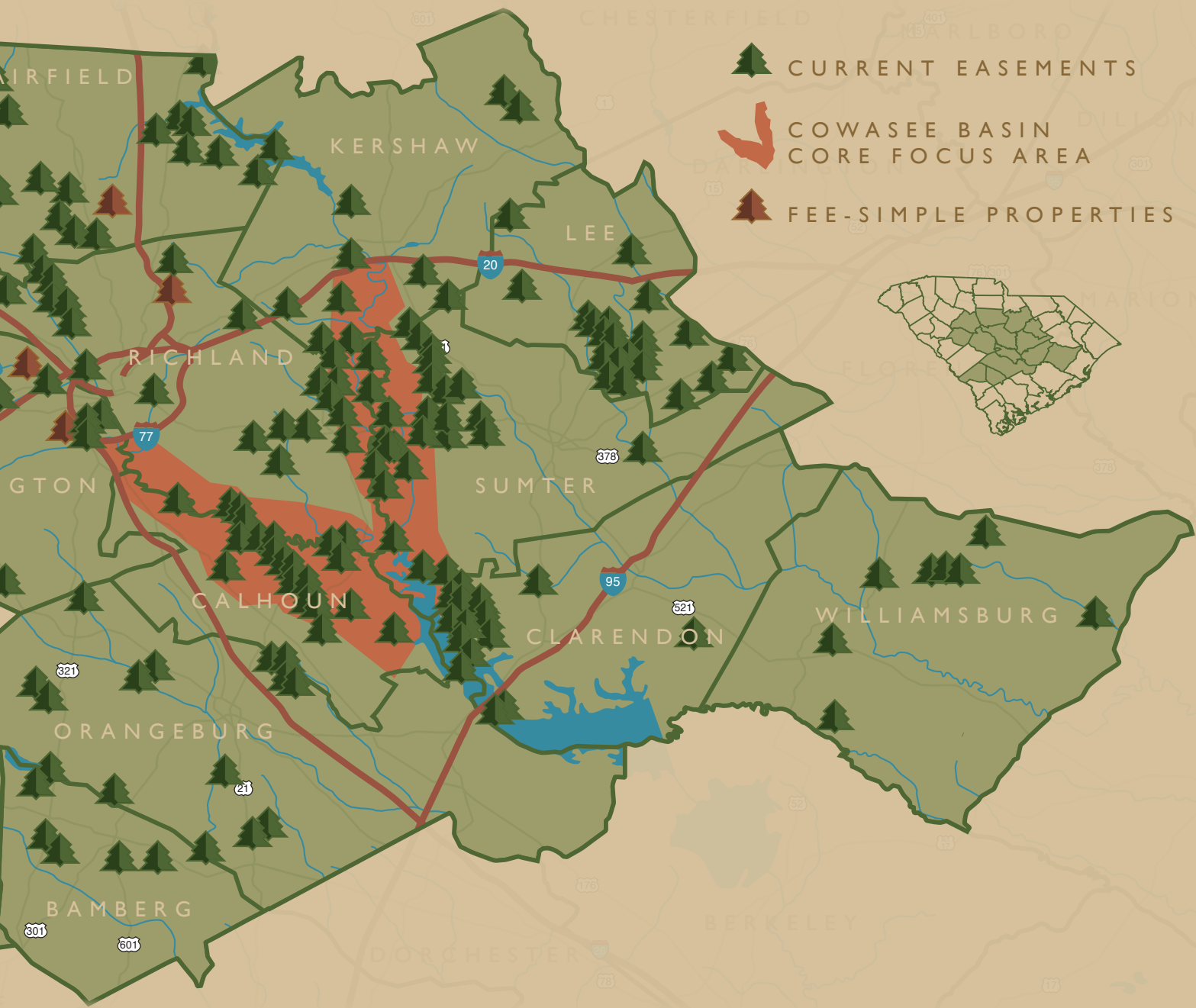


CONSERVATION

By the Numbers

	CLT PROPERTIES	ACRES
BAMBERG CO	6	1,899
BARNWELL CO	1	330
CALHOUN CO	16	6,334
CLARENDON CO	22	11,158
DARLINGTON CO	1	75
FAIRFIELD CO	30	10,430
KERSHAW CO	9	5,130
LEE CO	14	4,434
LEXINGTON CO	12	481
NEWBERRY CO	6	1,175
ORANGEBURG CO	10	4,887
RICHLAND CO	35	17,900
SUMTER CO	34	20,108
WILLIAMSBURG CO	8	5,912
TOTAL	204	90,252
COWASEE BASIN CORE FOCUS AREA	45	33,567





482

MILES OF RIVERS
+ STREAMS



40,008

ACRES OF WETLANDS
AND WATERFOWL
HABITAT PROTECTED



31,371

ACRES OF
FORESTS

COWASEE Basin

52,159

ACRES

conserved in COWASEE Basin
by CLT since 1994

33,567

ACRES

conserved in COWASEE Basin
Core Focus Area by CLT since 1994

COWASEE BASIN TASK FORCE PARTNERS

CONGAREE LAND TRUST

THE CONSERVATION FUND

DUCKS UNLIMITED

AUDUBON SOUTH CAROLINA

THE NATURE CONSERVANCY

FRIENDS OF CONGAREE SWAMP

NATURAL RESOURCES CONSERVATION SERVICE

RICHLAND COUNTY CONSERVATION COMMISSION

SC DEPARTMENT OF NATURAL RESOURCES

SUMTER COUNTY CONSERVATION DISTRICT

US FISH AND WILDLIFE SERVICE

INTERESTED LANDOWNERS

THE COWASEE BASIN CORE FOCUS AREA is the result of an initiative to protect the vital ecosystem in the COWASEE Basin and includes approximately 315,000 acres with the largest portion being in Richland and Sumter Counties. The focus area also includes other areas in the watershed such as Kershaw, Lexington, and Calhoun Counties (see map). It is anchored by Congaree National Park in Richland County. This park is about 27,000 acres in size and is the only national park in South Carolina.

The COWASEE Basin Task Force was created in 2005 in order to establish this major focus area along the Congaree, Wateree, and Santee Rivers, thus the acronym. The task force is a unique partnership between various conservation organizations and a group of interested landowners and land managers. They meet regularly to discuss collaborative conservation efforts and goals for the focus area working to improve mapping to identify large acreage areas to protect.

Landowners are encouraged to protect their land through the use of voluntary conservation easements. Currently 41% (128,658 acres) of the COWASEE Basin Core Focus Area is under public or private protection.

Other natural areas in the basin include Poinsett State Park, Manchester State Forest, Congaree Bluffs Heritage Preserve, and Sparkleberry Swamp. Additionally, the newly acquired 4000-acre Wateree Heritage Preserve in Richland County has been added, as well as a beautiful section of the Palmetto Trail.

Bottomland hardwoods make up about half of the core area, other areas are pine woodlands or farmland. This area is unique as it remains unspoiled due to large tracts of several hundred to several thousand acres each and owned by the same families for generations.

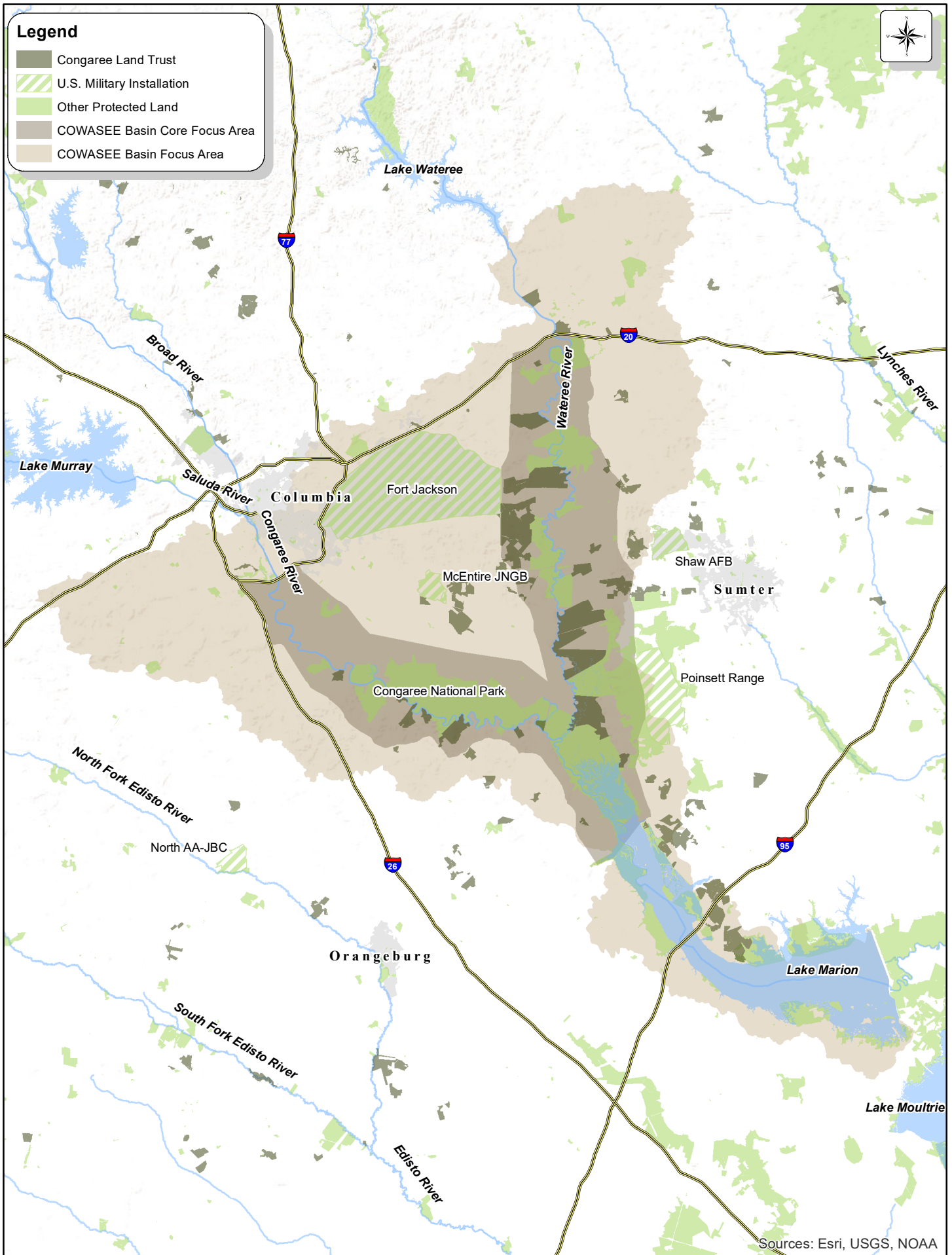
*Learn more about
the COWASEE
Basin online!*



**COWASEE
BASIN**
Congaree • Wateree • Santee Rivers

Legend

- Congaree Land Trust
- U.S. Military Installation
- Other Protected Land
- COWASEE Basin Core Focus Area
- COWASEE Basin Focus Area



Sustaining Healthy Watersheds

H EALTHY WATERSHEDS require forested and vegetated landscapes to provide clean air and water to surrounding communities. A watershed approach to conservation is a coordinated effort to conserve both public and private lands for present and future improvements to our natural resources such as air and water quality/quantity while improving wildlife habitats. Every acre that is protected from impervious surfaces, such as rooftops and paved surfaces, is an acre that will provide vital wildlife habitat, food, fiber, clean air, and water for our local communities. At CLT, three regions of focus, in addition to the COWASEE Basin, are the Lynches, Edisto and Broad River watersheds within our service area.

BROAD RIVER BASIN WATERSHED

The Broad River watershed begins in the mountains of North Carolina and flows through the Piedmont area of South Carolina. Congaree Land Trust's service area within this watershed is in Chester, Fairfield, Newberry, Lexington and Richland Counties. We continue to work with the South Carolina Department of Natural Resources, United States Forest Service, along with other agencies and conservation groups in order to conserve the silviculture and agricultural economies in this region while enhancing recreational opportunities and conserving water quality. To date Congaree Land Trust has a total of 11,804 acres conserved along the Broad River and within this watershed.



EDISTO RIVER BASIN WATERSHED

The longest free-flowing black river in North America, the water feeding the Edisto River begins its journey in Edgefield, Saluda and Lexington Counties, and continues through our service area of Barnwell, Bamberg and Orangeburg Counties as it makes its way toward the Atlantic Ocean.

In collaboration with our conservation partners and landowners, the land trust works to protect this the rich landscape and the diverse ecological communities within the basin while finding balance with some of our state's most productive agricultural and forest lands. In 2022, in order to increase the pace of conservation within this watershed, CLT launched a multi-year Conservation

Internship Project to engage graduate level students in the process of developing and implementing a prioritized approach to land protection in this area. To date Congaree Land Trust has a total of 7,154.6 acres conserved in the basin and we are committed to helping further the conservation efforts in this watershed and along the Edisto River.

LYNCHES RIVER WATERSHED

The Lynchies River begins in North Carolina, and flows through our service area in Kershaw, Lee, Darlington, Sumter and Williamsburg Counties. Along this river is a variety of landscapes such as pine uplands, farms, rural crossroads, and swamp forest. There are many special features including numerous small islands and sloughs, intermittent bluffs, bottomland hardwood wetlands, and artesian wells. The river is a habitat for fish and wildlife and provides various recreational opportunities including fishing, boating, camping and wildlife viewing. There are several public access points along the river including Lee State Park. Recently, CLT acquired three conservation properties and donated 350 acres to Lee State Park along this state designated scenic river thanks to the partnership of the Lynchies River Conservation Fund administered by Central Carolina Community Foundation.

These areas will be enjoyed for public recreation along the river and will be conserved in perpetuity for future generations.

Congaree Land Trust, in partnership with the fund and through private acquisition, is successful in protecting over **2,303 acres** in the Lynchies River watershed.

The Lynchies River Conservation Fund Board consists of an elected official and representatives from Conservation Voters of South Carolina, South Carolina Coastal Conservation League, Winyah Rivers Foundation, South Carolina Wildlife Federation, National Wildlife Federation, and Haile Corporation.



Stewardship Corps

CLT HAS 200 CONSERVATION EASEMENTS spread across 14 counties that require annual monitoring. The annual monitoring visits ensure that the terms of the easements are being upheld.

Our Stewardship Corps volunteers are a vital part of CLT's monitoring success. They also offer a look at the diverse ecosystems across central SC by sharing photographs and stories of the local flora and fauna they see on conserved properties. Many of the beautiful pictures that appear on CLT's social media sites were taken by our Stewardship Corps volunteers during their monitoring visits. We are extremely grateful for the dedication and service of this small group of volunteers. We couldn't do it without you!

2022 Stewardship Corps: Cailla Brehmer, Robert Bunch, Billy Cate, Joe Felder, Alan Reyner, Ed Siggelko, Angela Winnett.

"When I retired I knew I wanted to do some conservation-minded volunteer work and was fortunate to get acquainted with Congaree Land Trust in 2014. Their mission to help protect and conserve significant properties across the Midlands fit my plans exactly, and I couldn't have asked for a better and more dedicated group of people to work with over the years. I serve on the Stewardship Corps and assist with the annual monitoring of the many conservation easements held by CLT. I've been fortunate to have wandered around 75 properties that are protected in perpetuity and have appreciated the varied landscapes we have in the Midlands. From the rolling terrain and granite outcroppings of Fairfield County to the swamps and wetlands of Bamberg and Orangeburg Counties. I enjoy learning about the history of the land from the owners and seeing the natural beauty we're fortunate to help protect. With the number of new easements being added annually, and the small staff at CLT, I know the work of the volunteer land stewards is essential to the success of the land trust - and when it's fun, all the better!"

- ED SIGGELKO, STEWARDSHIP CORPS VOLUNTEER



Game & Garden

WORDS BY TRIPP BRADLEY, BOARD PRESIDENT

The 2022 Game and Garden event celebrated the first 30 years of the Congaree Land Trust while looking forward to the next 30 years. Hosted at The Hall at Senate's End, the night was one to certainly remember. The venue was exceptional and was only surpassed by the food and the fellowship. The evening featured five local chefs preparing wild game dishes in unique and creative ways for the guests to enjoy. This year we also added Steel Hands Brewery as our craft beer sponsor which paired nicely with the main dishes. 2022 was the first year that we added a silent auction to the event, and it was well received by everyone in attendance. Auction items varied from handmade jewelry all the way up to a hunting trip to Argentina.

The evening also had a brief program where we highlighted the past, present and future of the Congaree Land Trust. CLT's first Executive Director, Meribeth Moore, joined our first CLT Board Chair, Tom Kohlsaas, to present Dominion Energy's Iris Griffin, VP Power Generation at Dominion with a framed picture of CLT's first conservation easement which was established with Dominion Energy's predecessor company in South Carolina in 1994. The presentation was a special "thank you" for their commitment to preserving the land some 30 years ago. Paul McCormack with the South Carolina Department of Parks, Recreation and Tourism was also on hand for another big announcement relating to a project that we have been working on with them. At the event, we unveiled our plans to donate three parcels in Lee and Darlington counties along the Lynches River to the SC State Parks to provide further access and enjoyment to the public. Lastly, Stuart White, Executive Director and Mary Crockett, Land Protection Director, were both recognized for their 10 year anniversaries with the Congaree Land Trust.

A big thank you to all of the CLT staff and their families for going the extra mile to put on such a special evening.

Thank you also to the chefs from The War Mouth, Bourbon & Black Rooster, Honey River Catering, Spotted Salamander and Smoked for providing the excellent dishes that everyone enjoyed. We greatly appreciate all of our sponsors, especially our presenting sponsor, Bauknight Pietras & Stormer, P.A. The silent auction donors should also be commended for contributing to the success of the night with their unique and creative donations. Thank you also to Ann Nolte and Herb Bradley for all of your work with the flower arrangements.



PRESENTING SPONSOR



GAME SPONSORS



GARDEN SPONSORS

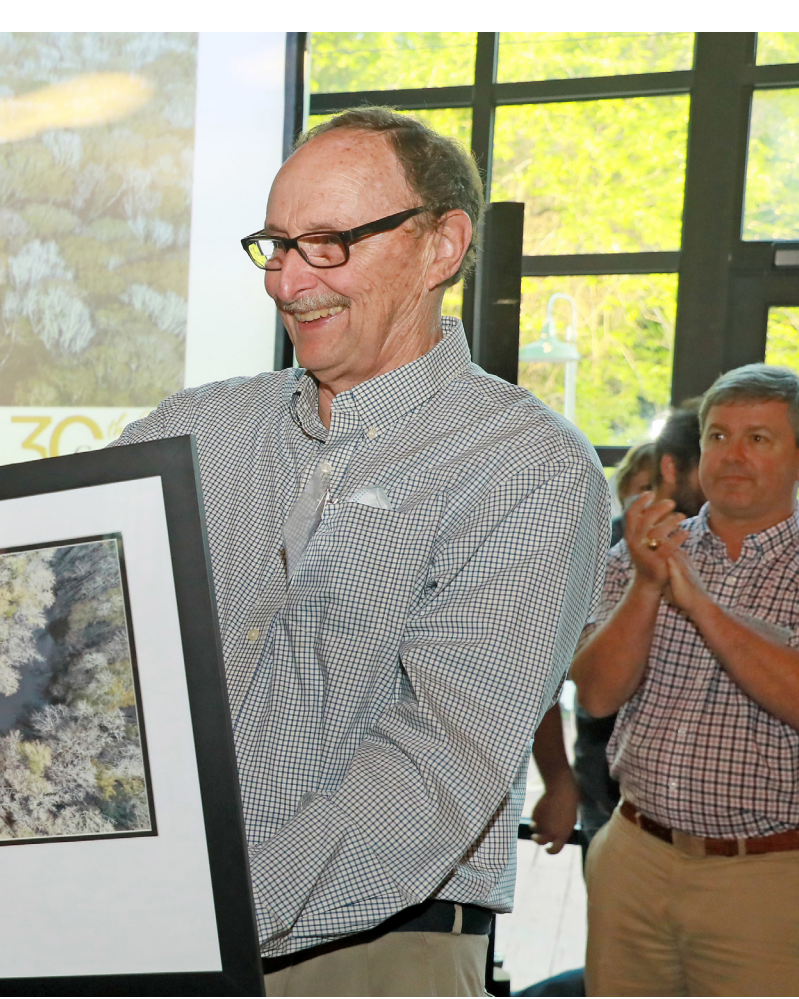


BEVERAGE SPONSORS



IN-KIND SPONSORS





EVENTS



CLT Escapes



CLT was excited to bring our Escapes program back this year. In the spring, attendees enjoyed a delicious walk along the Broad River at River Creek Farms led by Matt Kip, Full Belly Foragers. With Matt's guidance, we sampled wild edibles like blackberries, flowers of a yucca plant, and barren strawberries and drank some surprisingly delicious pine needle tea.

This fall CLT hosted a paddle Escape on the North Fork of the Edisto River from our most recent conservation easement in Lexington County. 2023 will bring a full lineup of events and we look forward to seeing our CLT adventurers there!



PAST ESCAPES

Equestrians Trail Ride

Wild Edibles Walk

Youth Conservation Adventure

North Fork Edisto River Paddle

Birds & Brunch

En Plein Air Painting



Thank You

Congaree Land Trust is fortunate to work with many great organizations and agencies in a collaborative approach to the successful protection of our lands and natural resources. These partnerships, combined with conservation minded landowners, are the *foundation* of our conservation efforts.



Conservation is Good Business

C
L
T



90,000+
ACRES CONSERVED

ACROSS **202+** PROPERTIES

SUPPORT ECONOMIC VITALITY THROUGH...

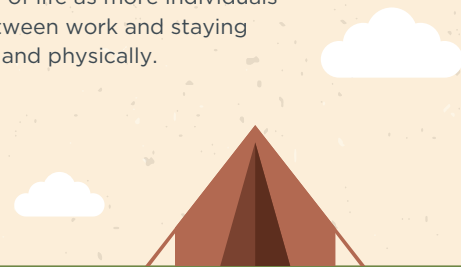
PROTECTING THE ENVIRONMENT

The environment plays a key role in sustaining the health and well being of our population. Protecting land can ensure that SC remains a healthy and clean place to live with cleaner air, safer water and providing green spaces for recreation and physical activity.



PROTECTING QUALITY OF LIFE

Access to natural green spaces is one of the top indicators for quality of life as more individuals seek out balance between work and staying healthy, emotionally and physically.



ESTABLISHING SUSTAINABILITY STANDARDS

Businesses can set sustainable standards that attract new industry partners who respect South Carolina's natural resources and continue the foundation of investment in land and conservation.



DRIVING CUSTOMER SUPPORT

Consumers, now more than ever, are focused on supporting companies with a strong mission reflecting their commitment to a higher social good for the community they serve. This is especially true with millennials who represent a growing proportion of all consumer spending. 78% of Americans believe companies must do more than just make money; they must positively impact society as well.

FARMING, FORESTRY AND OUTDOOR RECREATION ACCOUNT FOR...

\$71

BILLION TO OUR
STATE ECONOMY

MORE THAN
377,000
JOBS

Contact us for more information at
CGB@CONGAREELT.ORG





FOUNDATIONS

CENTRAL CAROLINA COMMUNITY FOUNDATION
 EDWARD & DOROTHY KENDALL FOUNDATION
 THE DARNALL W. AND SUSAN F. BOYD FOUNDATION, INC.
 LUCY HAMPTON BOSTICK RESIDUARY TRUST
 JOHN J. & INEZ K. ROSS CHARITABLE FUND
 NORMAN J AND GERRY SUE ARNOLD FOUNDATION
 GARY W. DIETRICH FAMILY FOUNDATION
 OWEN FAMILY FOUNDATION, INC.
 FRANCIS BEIDLER FOUNDATION

CORPORATE PARTNERS

\$5,000+
 MAST GENERAL STORE

BUSINESS SUPPORTERS

\$2,500 - \$4,999
 DIVERSIFIED DEVELOPMENT
 MORGAN STANLEY THE DAVIDSON MCNAIR GROUP
 OLD PINES, LLC
 PALMETTO ENVIRONMENTAL CONSULTING, INC.

\$1,000 - \$2,499
 AGSOUTH FARM CREDIT
 COASTAL CAROLINA NATIONAL BANK
 FIRST RELIANCE BANK
 KIRK COMMERCIAL CONSTRUCTION
 MATT MOORE LLC
 MID-CAROLINA MARINE, LLC
 NAI COLUMBIA
 NEXSEN PRUET, LLC
 SOUTH STATE BANK
 THE CHAPLIN COMPANY

\$250 - \$999
 ANCHOR INVESTMENT MANAGEMENT
 GREAT SOUTHERN HOMES, INC.
 HOOD CONSTRUCTION COMPANY, INC.
 NATIONAL LAND REALTY
 OVER THE MANTEL
 PALMETTO GARDEN CLUB OF SOUTH CAROLINA
 RIVER RUNNER OUTDOOR CENTER
 RL SOLUTIONS
 SC CONSERVATION CREDIT EXCHANGE

IN-KIND SUPPORTER

HAYNESWORTH SINKLER & BOYD, P.A.
 RIVER RUNNER OUTDOOR CENTER
 WALKER AND LAUREN GATE

INDIVIDUAL DONORS*

\$5,000+
 ALTON LOUIS EUBANKS

\$2,500 - \$4,999
 RACHEL AND ALEC CHAPLIN, JR. 

\$1,000 - \$2,499
 SUZANNE AND MOFFATT BURRIS  
 BETSY AND BILLY CATE 

BOB DAVIDSON
 ROBERT HAMPTON
 JOHN AND BETH MCLEOD
 CLARKE MCNAIR
 FRANCES AND BURGESS MILLS
 ANN NOLTE AND HANK STALLWORTH 
 ANNE AND ALAN REYNER
 CHARLIE THOMSON
 CAREY AND DALLON WEATHERS 

\$500 - \$999
 FORD AND GEORGE BAILEY 
 FRANK BEIDLER 
 CINDY AND RUSTY BRODIE
 KATIE AND ROBERT BUNCH 
 JULIA AND WOODY MOORE
 PATTY AND BOB PERRY
 KAT SALLEY 
 DONALD SCOFIELD
 AMY AND VINCENT SHEHEEN
 KIT AND JOEL SMITH
 JULIANNE AND DAVE SOJOURNER 
 FELICIAN STRATMANN
 CHARLES THOMPSON 
 KATHY AND JIM WHITE
 ELISABETH AND BENTON WILLIAMSON 
 KATHERINE AND WILLIAM WOLFRAM 

\$250 - \$499
 JUDY CLARK ANDERSON
 KATHY AND HERB BRADLEY
 TRIPP AND CAROLYN BRADLEY 
 SUSAN AND ALAN BRILL 
 JIM AND LOUISE BURNS
 SUE AND CHARLIE CATE 
 BETH CHAPLIN
 LAMAR AND GAIL COMALANDER 
 DR. AND MRS. EDWARD CROSSWELL
 ARIANNA AND CURTIS DERRICK

DONOR KEY

 EASEMENT LANDOWNER

 CONSERVATION SUSTAINER

 MIDLANDS GIVES

 RECURRING DONORS

*Individual donors between 7/1/2021 - 6/30/2022

JEAN DERRICK
SANDY DUBOSE
JERRY AND LARRY FAULKENBERRY
PEGGY AND TOM FITTS 🌲
TED HAYNE
SUE AND LLOYD HENDRICKS 🌲
LINDA AND DENNIS HILTNER 🌲
MARK KINZER
CHRISTOPHER & ARIEL KIRK 💰
SMYTH AND RAHN MCCRADY 🌲
RYAN MCCUE
MARGUERITE AND FRANK MCLEOD 🌲
FRANCIS AND CAL MCMEEKIN
PHILLIP MOORE
GAIL MORRISON
PAUL T PALMER JR.
DEBBIE AND ED SIGGELKO
ANNE AND JULIAN SINCLAIR
SIEGLINDE THOMAS
PRESTON TRIPPE 🕒
CATHERINE F WALKER
LINDA AND GEORGE WINDISH 🌲
ELIZABETH AND BOB WELLING

\$249 AND BELOW

JULIAN C. ADAMS 🌲
L. B. ADAMS
LISA AND WESTON ADAMS 🌲 🕒
ANGELA AND RON AHLE
MARTHA EVELYN AND ROWLAND ALSTON 🌲
BARBARA AND BILL ANDERSON 🌲
ELIZABETH ARMOUR 💰
JEN AND KEVIN ASBILL 🌲
GORDON AND LYNNE BAKER
JUDY BARNES 💰
HENRY AND RACHEL BARNETT
KELLER BARRON
ASHLEY BATES
STERLING BECKMAN
ANDREW BEMIS
NATALIE BERGHOLZ 🌲
BILL MILLIKEN FORESTRY, LLC
LAURA BLAKE-ORR

R M BOUKNIGHT
JULIE BOWERS
STACEY AND JIM BRENNAN
JACKIE AND RONNIE BRUNSON
NANCY BRYANT
DAVIS BUCHANAN
MARY R. BULL 💰
HUGH AND MEREDITH BUYCK 🌲
MARY MAC AND BILL CAIN 🌲
CATHIE AND MELVIN CALLIHAM
ELIZABETH CANTEY
LUCILLE AND JIMMY CANTEY
EVAN CARSON 🕒
DAWN CATALANO
JUDIE CHAPMAN
RON AND MARGARET CLAYPOOL
MARJORIE PALMER CLEARY 💰
KENDRICK CLEMENTS
COASTAL CONSERVATION ASSOC. SC
DENNIS COHEN
ANDREW COLE
MICHELLE AND ATWELL COLEMAN 🌲
CREIGHTON COLEMAN
THOMAS COLEMAN
NANCY AND STEVE COLLUM
ALLEN CONGER
LES AND ELIZABETH COTTER
VERD AND STEVE CUNNINGHAM
MAHALIE AND BILL DAVIES
ROBERT DAVIS
JANET AND RICK DETWILER
WILL DETWILER
DONNY AND CORINNE DIAL
CLIFF DODSON
HENRY DORN
DOUGLAS DOSTER
GLORIA DOUGLASS
LOUIE AND MARLI DRUM
DI DUBOSE
TRISH AND CLARKE DUBOSE
GINNIE AND LADDIE DUBOSE
MARGARET AND RANDOLPH DUNLAP
LANELLE DURANT

MARTHA AND JOHN DURST
MARY LYNDA TILLER DUTCHER 🌲
CORNELIA AND WALTER EDGAR
JOHN EGAN 💰
JIM ELLETT 🌲
LEON EMBER
ELIZABETH FAIREY
JOHN FAIREY 🌲
DARREN AND TAY FOY 💰 🌲
WILLIAM AND JANE FRANCIS
SISSY AND JOHN FRIERSON 🌲
KAREN AND RON GALLOWAY
FRED AND RHETTA GANTT
KIMBERLY GEARHART 💰
E. ANNE GILLESPIE
WOODY GRAHAM
BENNETT AND HELEN GRIFFIN
KATIE GUNTER
LINDA & DAVID GURSKY
PATRICIA AND CANTEY HAILE
ANNA AND WILL HALTIWANGER
RHETT AND BEAVER HARDY
EDWINA AND JOE HARRELL
LANE AND WILLIAM HASELDEN
PEGGY HEARD
DAVID HODGES 💰
LUNDA AND VAN HOFFMAN
EUGENIA AND HEATH HOOVER 🌲
TONI AND JEFF HUBBELL
CAROLYN HUDSON 💰
LAURA AND TOM HUGHES
WILLIAM HUNT
BARBARA AND WILLIAM JACKSON
POLLY JAMES
PATRICIA JERMAN
ELIZABETH AND GUY JOHNSON
SUSAN JOHNSTON
BETSY KAEMMERLEN
SUE AND NEEL KEENAN
BEVERLY AND CALHOUN KENNEDY
JANE AND ROBERT KEY
DENE AND CHIP KING
DAVIS KIRKPATRICK

GEORGANNE AND DAVID KIRVEN \$ 🌲

JESSICA KROSS

JOHN KUPFER \$

CARY AND ANGUS LAFAYE 🌲

HELEN AND TUCK LAFFITTE

REBECCA LAFFITTE \$

ASHLEY LAMBERT

POLLY AND NICK LAMPSHIRE

MARVIN LARE

JESSICA LAW \$

GAYLE LOEBER \$

LANG AND JESSIE LONG

SUZY AND JAMES MADDEN \$

WYNDHAM MANNING 🌲

WENDY MANOS

SUSAN AND DON MATHIS

STEPHANIE AND MICHAEL MCCABE

KATHY AND JOE MCELVEEN

ASHLEY MCENTIRE

YANCEY MCLEOD

NATHANIEL T. MCMASTER

AMANDA MCNULTY

MARY FRANCES AND TOM MCTEER

ANNE AND JOE MELANSON

JAMES AND CAROL METTS

CAROLINE BAILEY MEYER \$

BILL MILLIKEN

WARNER AND LINDA MONTGOMERY

CARLA AND JC MOORE

DEBORAH MOORE

KIRSTEN AND JOHN MOORMAN

PAMELA MULVANEY

NELSON MULLINS RILEY & SCARBOROUGH LLP

CHRIS AND RICHARD NESS 🌲

NORBERT AND FRED A PALECEK

MARGARET PENDER

TERRY AND SAM PHILLIPS

SIMS AND ANNE PROPST

CHRIS RAY

JOHN C. RICH

DREW ROBB

DONNA RODGERS

DEBBIE ROLAND

MATTHEW SCHNABEL

CLAIRE AND DAVID SCHUETRUM

JOANN SCHWARTZ

JAMES SHAW

DONNA AND CARL SHEALY \$

VICKY AND DENNIS SHEPARD

JUNE AND GEORGE SHISSIAS

KATHY AND KEN SIMMONS 🌲

BECKY AND BEN SKELLEY

DONNA AND DON SMITH

KATHY AND EMERSON SMITH

MARY SMITH

ADELAIDE AND CURT SPENCER

DWIGHT STEWART \$

SHELLEY STEWART

KERRY STUBBS \$

PAT AND RETT SUMMERVILLE 🌲

MOTTE TALLEY

JUDY AND THAD TIMMONS

VIRGINIA AND EVERETTE TOMPKINS

CAROLYN AND JAMIE TUPPER

NANCY TURNER

JOANN TURNQUIST \$

JULES AND SHELTON TWINE

SUSAN AND RICK UMBACH

ROBIN UNDERWOOD

GAIL WAGNER

LUCILLE WALTERS ☺

JOE WATSON

BARBARA AND JIMMIE WATSON

ROBERT WESTON

KARYN WHITE \$

MELISSA WHITE \$

STUART AND LINDSEY WHITE \$

DEBBIE WHITEHEAD

RETA AND ELMER WHITTEN

LISA AND ROBBIE WILCOX

TAYLOR WILLIAMS

KAKI AND JOHN WILLIAMSON 🌲

DEBORAH MILLER WINSLOW \$

ELLEN WOOD

VICTOR WRIGHT

JOANNE AND DON WUORI

LAUREN YOUNGBLOOD

SUZANNE ZIEMKE

DONOR ADVISED FUNDS

DONNA AND CURT RONE FUND

Central Carolina Community Foundation

DR. AND MRS. LANNEAU LIDE, JR.

TOCQUEVILLE ACCOUNT

The United Way

CAROLINE DIXON BARTMAN

CHARITABLE ACCOUNT

Fidelity Charitable

JOHN AND MARIE FAIREY TOCQUEVILLE ACCOUNT

United Way of the Midlands

MR. AND MRS. DAVID E. DUKES TOCQUEVILLE ACCOUNT

United Way of the Midlands

HUNTER AND EVELYN CLARKSON

Schwab Charitable DAF

THE H. DALLON WEATHERS FAMILY FUND

Coastal Community Foundation

THE LOUIS EUBANKS FUND

Vanguard Charitable

TRIBUTES*

IN MEMORY OF

ELINOR AVERYT

by Alec Chaplin, Jr.

EVA AND TALLEY MOORE

by Robert Hampton

JOHN QUITMAN MARSHALL, JR.

by Hood Construction Company, Inc., Cathie Calliham, Davis Buchanan, Kirk Commercial Construction, James Lockwood Tupper, Shelley Stewart, Jackie and Ronnie Brunson, Nelson Mullins Riley and Scarborough LLP

PATRICIA BRIGHT

by Elizabeth and Guy Johnson

ANNE MILLIKEN

by Bob and Patty Perry

JOYCE WILLCOX

by Jane and Mark Salley

NANCY CLIFTON KINZER

by Mark Kinzer

IN HONOR OF

CHRISTIAN HENDRICKS

by Loyd Hendricks

BOB THOMAS

by Sieglinde Thomas

BETSY AND BILLY CATE

by Silas McMeekin

Did you know?

CONGAREE LAND TRUST HAS...

131

MILES

of protected viewshed along public roads

7,438

ACRES

of land that are currently being farmed
(does not include forestry)

6M+

METRIC TONS OF CARBON

stored on CLT conserved properties
(that's 73 metric tons per acre!)

1,525

ACRES

protected as new Conservation Easements in the year 2021

PLANNED GIVING

What will your legacy be?



PERHAPS YOU CHOOSE TO LIVE in central South Carolina or spend time here because this land—its winding rivers, pastoral settings and ancient forests—inspire you. You feel this land connects you to family memories, summer trips to the lake, stopping at your favorite farm stand, catching your first fish, or simply enjoying the scenic view on a country road.

If this land tells the story of your past and encompasses your vision for the future, you can make a significant difference in conserving what makes this part of South Carolina so special—its land, water and way of life—through planned giving to Congaree Land Trust. In addition to conventional planned gifts, CLT is uniquely qualified to accept gifts of land.

Download the full brochure at congareelt.org/plannedgiving

COWASEE LEGACY SOCIETY

Introducing the COWASEE Legacy Society! Congaree Land Trust wants to recognize and honor those individuals who have so generously supported our conservation mission through their planned gifts.

Have you already included Congaree Land Trust in your planned giving?

We would be delighted to recognize you as a current Society Member and invite you to our Annual COWASEE Legacy Society & Giving Circle event. To let us know of your planned gift or to inquire about specific planned giving opportunities, please contact Executive Director, Stuart White at (803) 988-0000.

My grandfather told me that you never own land, you just live on it for a while, hopefully a long while, and your responsibility is to pass it along to someone else, and pass it along better than when you lived on it. This land will always be a farm, or a forest, and that makes us very pleased.

HANK STALLWORTH, PROTECTED PROPERTY OWNER



Thank You

**TO OUR ANNUAL
REPORT SPONSORS**



**THE BETH AND RUSSELL BAUKNIGHT
FUND AT CENTRAL CAROLINA
COMMUNITY FOUNDATION**

Excellence. Trust. *Permanence.*

Congaree Land Trust has been an accredited land trust since 2011 and is a founding member of TerraFirma.

The accreditation seal is a mark of distinction in land conservation. It is awarded to land trusts meeting the highest national standards for excellence and conservation permanence. In 2011, CLT completed a rigorous review process to obtain the seal, joining a network of organizations united by strong ethical practices. This trusted network of land trusts has demonstrated fiscal accountability, strong organizational leadership, sound transactions and lasting stewardship of the lands they conserve. That same year, CLT became a founding member of TerraFirma, a Land Trust Alliance initiative to help land trusts defend their conserved lands from legal challenge. This national initiative demonstrates land trusts' commitment to take seriously their responsibility to ensure the permanence of their conservation work.



Conservation
Excellence



Connect with Congaree Land Trust

Follow us on Social Media



FACEBOOK
[FACEBOOK.COM/CONGAREELANDTRUST](https://www.facebook.com/congareelandtrust)



INSTAGRAM
[INSTAGRAM.COM/CONGAREELT](https://www.instagram.com/congareelt)

Join our Mailing List

**TEXT CONGAREELT
TO 22828 TO JOIN
OUR MAILING LIST!**



30th Anniversary
CONGAREE
LAND TRUST

PO Box 5232, Columbia, SC 29250

NON PROFIT ORG
US POSTAGE
PAID
COLUMBIA, SC
PERMIT 557

OFFICE: 2711 MIDDLEBURG DR., STE 312, COLUMBIA, SC 29204
MAILING: PO BOX 5232 COLUMBIA, SC 29250 | PHONE: (803) 988-0000
CONGAREELT.ORG